



Installation Guide

For HyPanel



Smarter Home
Sweeter Life

Welcome!

This guide applies to PS51-HEATING-EU model of HyPanel.

Contents

Before We Start	2
In the Box	3
Check Compatibility	4
Wiring	7
Installation	11
Get Help	16

Before We Start

Your first time installing this product may take up to 40 minutes. You'll get faster after each installation.



Warning

The installation procedure involves handling high voltage wiring. Please be careful. To avoid serious personal injury, death, or property damage, turn OFF the power to the circuit and follow all safety precautions before proceeding.

Working with electricity can be dangerous. If you are unsure about, or uncomfortable with the installation, seek the help of a qualified electrician.



Warning

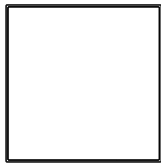
Keep the device and all its parts out of the reach of children. The small parts or accessories contained may be a choking hazard to them.



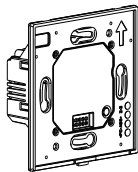
Important Note

The heating model of HyPanel must be positioned downstream from the circuit breaker to ensure effective overheating protection.

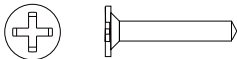
In The Box



HyPanel X 1



Flush Mounted Module x 1



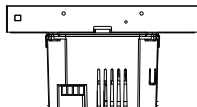
ST3x20mm Phillips Self Tapping
Screw x 2



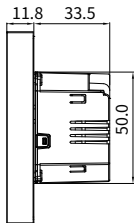
NTC Thermistor X 1

Check Compatibility

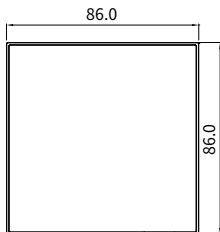
Product dimensions (mm)



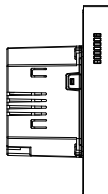
⑤ BOTTOM VIEW



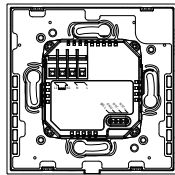
② RIGHT VIEW



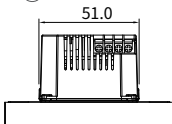
① FRONT VIEW



③ LEFT VIEW



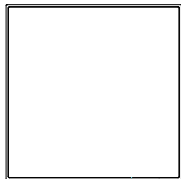
④ BACK VIEW



⑥ TOP VIEW

Working space

Make sure HyPanel is compatible with the location where you want to install it.

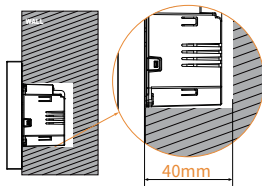
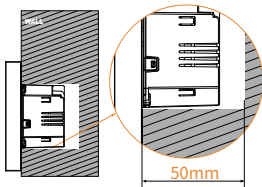


① HYPANEL FRONT VIEW

1100-1600mm TO BOTTOM OF PANEL

ADA Compliance Requirement

GROUND



② SIDE VIEW: HYPANEL IN WALL

A 50mm(2 inches) deep electrical box is highly recommended for ease of installation. In some scenarios, especially when the wires can be pushed back into the wall far enough, it may be possible to use a 40mm(1.6 inches) deep box.

Maximum load

The device has a maximum resistive load capacity of 16A, supporting a power load of up to 4000W at 250VAC.

90-250VAC, 50/60 Hz power required

HyPanel can be used in countries with varying standard voltages, from 90V to 250 V AC, at a frequency of either 50Hz or 60Hz.

Wire sizes for different connections

- RS485 and NTC: Recommended wire size is 0.14mm^2 - 0.75mm^2 (26-18AWG).
- L1 and N1: Maximum wire size should be 2.5mm^2 (14AWG).

Support Wi-Fi connections

HyPanel supports Wi-Fi connectivity on both 2.4GHz and 5GHz frequency bands, complying with the IEEE802.11 b/g/n standards.

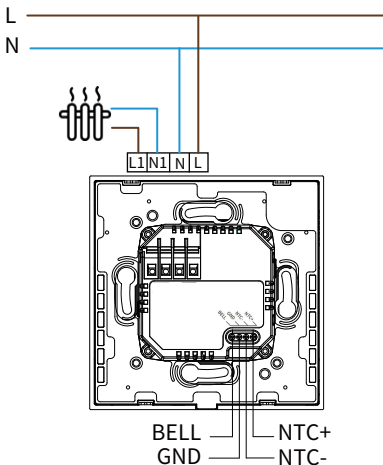
Wiring



Warning

Turn OFF the circuit breaker before wiring and proceeding!
Always use a voltage detector to verify the power is OFF
before wiring and installation!

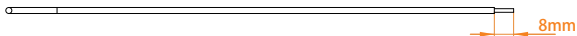
Identify wires



- ◆ Neutral wire(N) typically comes from the wall.
- ◆ Line wire(L) provides 90-250 Volts of power to HyPanel.
- ◆ Load wires(L1) that connect the HyPanel to the heating thermostat or other devices.
- ◆ BELL and GND are used to link a door bell. Not required if no bell is used.
- ◆ NTC+ and NTC- are for the thermistor lead connections. Not required if no thermistor is used.

Connect wires

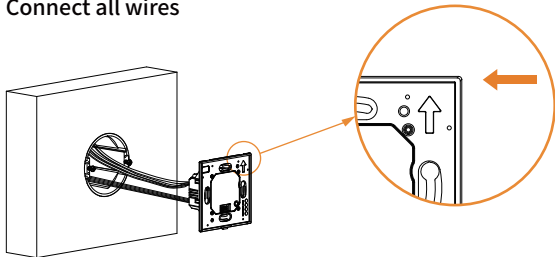
1 Strip and straighten wires



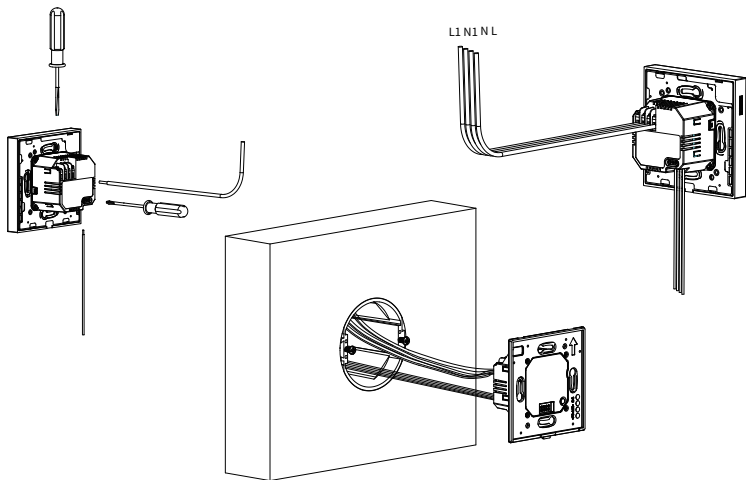
Wires connected to HyPanel should be $1.5\text{mm}^2 \sim 2.5\text{mm}^2$ in size and have stripped and straight ends.

Remove the plastic sheathing of the wire, and make sure the exposed wire ends measure approximately 8 mm (5/16 inch) in length.

2 Connect all wires



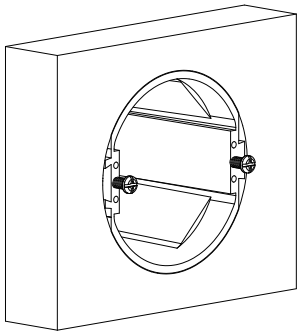
Always make sure the arrow on the front of the flush mounted module is pointing up.



- Plug the wires to the corresponding terminals on the back of the flush mounted module.
- Tighten the screws clockwise with a flat-head screwdriver until wires are secure.
- Double check by gently tugging on each wire.
- To use a thermistor, plug the NTC cable into the NTC+/- terminals.
- To connect with a door bell, connect the wires to the BELL and GND terminals respectively.

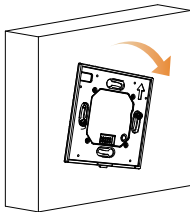
Installation

1 Insert screws

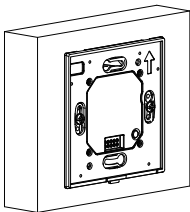


- Insert the supplied screws into the designated holes on the electrical box.
- Change the torque on the electric screwdriver to 5kgf.cm.
- Turn screws clockwise with the screwdriver.
- Do not fully tighten the screws. The screw head must protrude at least 3 mm (1/8 inch) from the wall surface.

2 Install flush mounted module

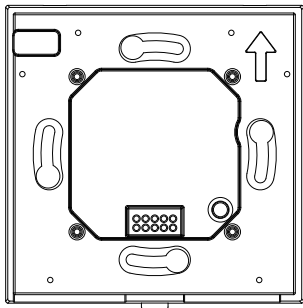


Attach the flush mounted module to the electrical box. The screws should go through the holes on the module.



- Adjust the module to be level and ensure it is flush against the wall.
- Tighten the screws to attach the module to the wall, taking care not to over-tighten them.

3 Test connected devices



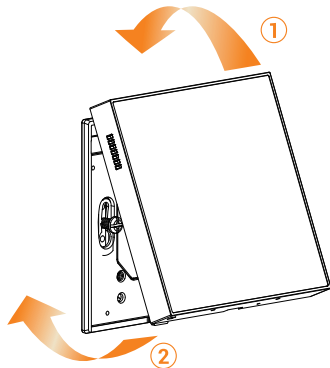
- ◆ Turn on the circuit breaker to provide power to the flush mounted module.
- ◆ Press the button on the module to check if the connected devices can work.

If the devices do not turn on/off, do NOT install the panel. Turn the power off and re-check the wire connections.

4 Install panel



Turn OFF the circuit breaker before you install the panel.

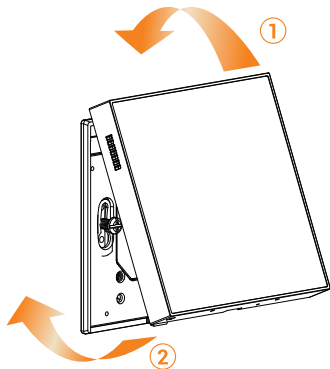


- ◆ Position the panel at a tilt as the picture shows.
- ◆ Press the panel into the flush mounted module until it clicks.

4 Install panel



Turn OFF the circuit breaker before you install the panel.



- Position the panel at a tilt as the picture shows.
- Press the panel into the flush mounted module until it clicks.

Congratulations!

You are done with the HyPanel installation!

Start your smart home journey with Akubela now!

Get Help

For help or more assistance,
contact us at: <https://ticket.akuvox.com/>

For videos, guides, and additional product formation,
visit us at: <https://knowledge.akuvox.com>

